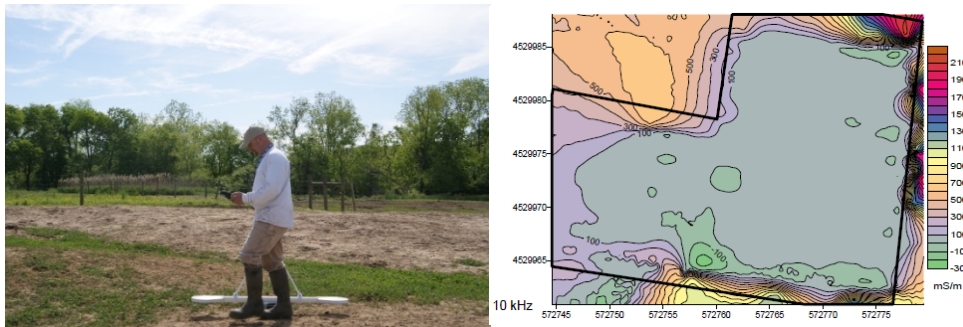
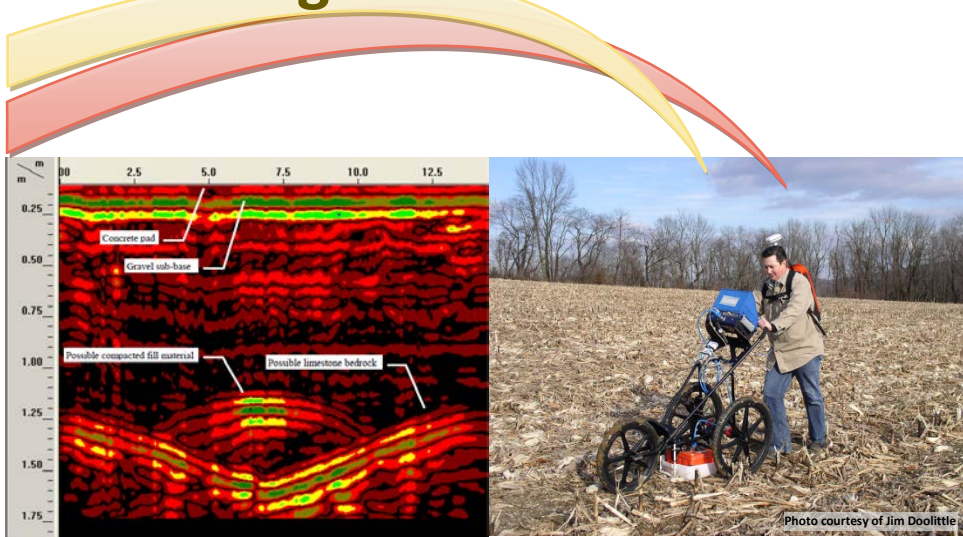


# Ground Penetrating Radar & Electromagnetic Induction



## Applications

- Depth and/or thickness of organic material
- Depth to water table
- Depth to fragipan
- Depth to bedrock
- Bathymetry on freshwater pond (contour pond bottom)
- Pond sedimentation thickness
- Cultural resources
- Detection of salt water intrusion
- Detection of subsurface animal waste flows
- Old landfill delineation in urban areas
- Anthropogenic soil deposits
- Tile drainage
- Tree root distribution
- Compaction
- Wetland restoration - dam bridging
- Others



### What are GPR and EMI

Ground-penetrating radar (GPR) is a non-invasive, high-resolution geophysical method used in the investigation of earthen materials. Ground-penetrating radars transmit short pulses of high to ultra high frequency electromagnetic energy into the ground to detect subsurface interfaces. Interfaces often correspond to major soil, stratigraphic, and lithologic layers or features.

Electromagnetic induction meters measure the bulk averaged or apparent conductivity ( $EC_a$ ) of soils and earthen materials. The apparent conductivity of soils is influenced by the type and concentration of ions in solution, the amount and type of clays in the soil matrix, the volumetric water content, and the temperature and phase of the soil water. The  $EC_a$  of soils will increase with increases in soluble salts, water, and/or clay contents. Interpretations of  $EC_a$  data are based on the identification of spatial patterns in data sets, which are often displayed with plotting software such as GIS.

Source: [Geophysical Survey Systems, Inc.](#)

For more information please call  
Dr. Richard K. Shaw or Edwin Muñiz

United State Department of Agriculture  
Natural Resources Conservation Service  
220 Davidson Avenue, 4<sup>th</sup> Floor  
Somerset, New Jersey 08873

(732) 537-6061  
(732) 537-6062  
[www.nj.nrcs.usda.gov](http://www.nj.nrcs.usda.gov)



"The U.S. Department of Agriculture (USDA) prohibits discrimination in all of its programs and activities on the basis of race, color, national origin, age, disability, and where applicable, sex, marital status, familial status, parental status, religion, sexual orientation, political beliefs, genetic information, reprisal, or because all or part of an individual's income is derived from any public assistance program. (Not all prohibited bases apply to all programs.) Persons with disabilities who require alternative means for communication of program information (Braille, large print, audiotape, etc.) should contact USDA's TARGET Center at (202) 720-2600 (voice and TDD)."

To file a complaint of discrimination, write to USDA, Assistant Secretary for Civil Rights, Office of the Assistant Secretary for Civil Rights, 1400 Independence Avenue, S.W., Stop 9410, Washington, DC 20250-9410, or call toll-free at (866) 632-9992 (English) or (800) 877-8339 (TDD) or (866) 377-8642 (English Federal-relay) or (800) 845-6136 (Spanish Federal-relay). USDA is an equal opportunity provider and employer.